



S-CUBE

Service “Orchestration” Challenges An S-Cube Perspective

Andreas Metzger

University of Duisburg-Essen

**Dimka Karastoyanova
Frank Leymann**

University of Stuttgart



Funded by the European Community's 7th Framework Programme FP7/2007-2013 / Objective 1.2

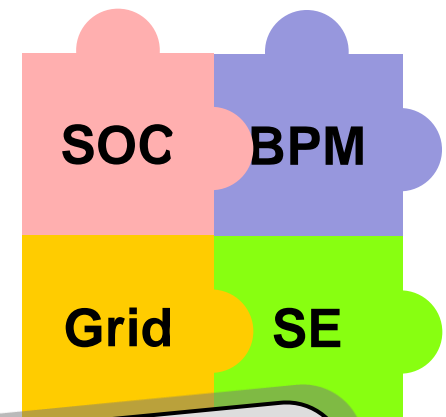
www.s-cube-network.eu



Establish a **unified, multidisciplinary, vibrant research community** that will...

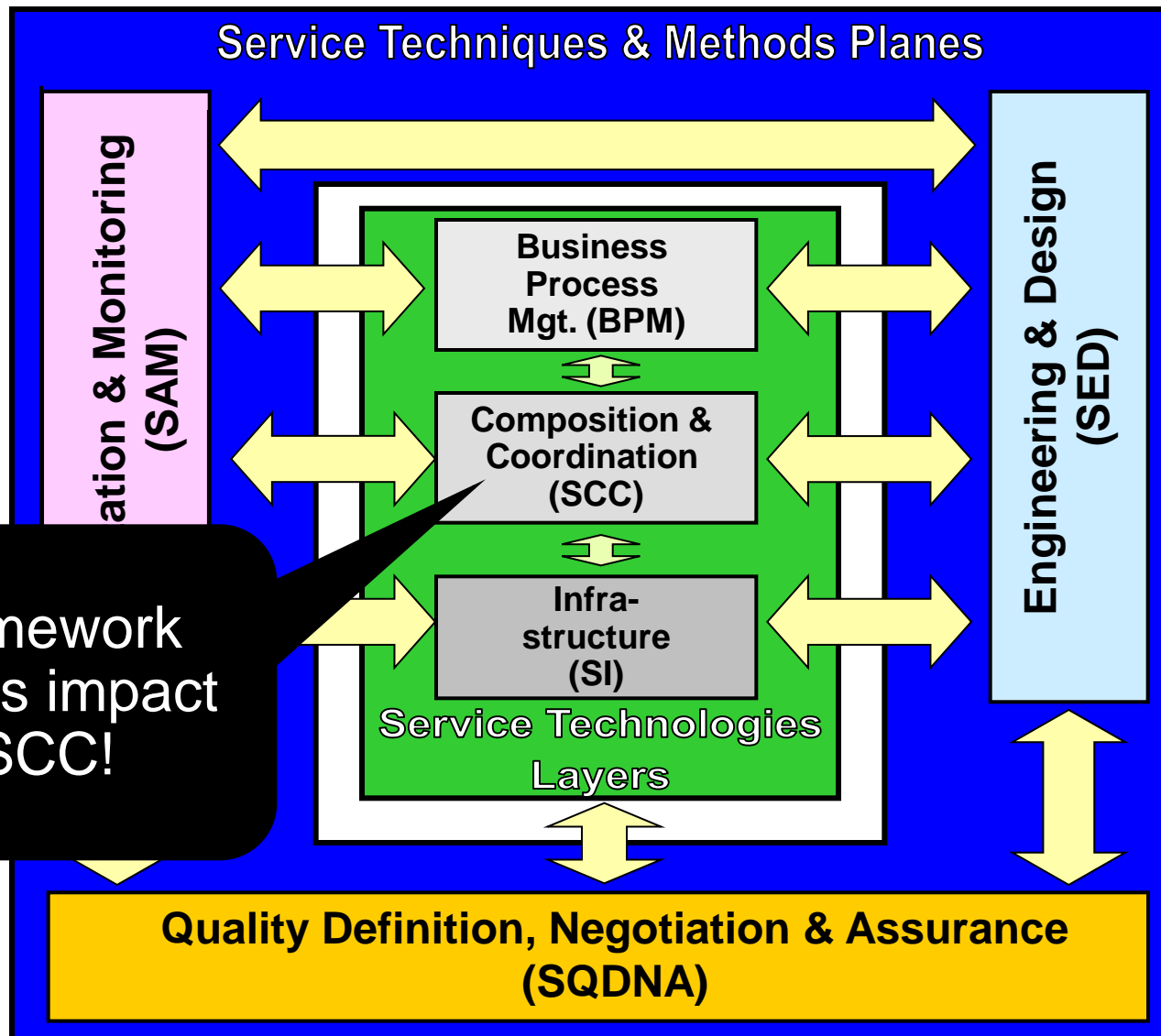
... invent the next wave of **service technologies**

... establish **innovative, holistic service engineering & adaptation** principles, techniques & methods



Note: S-Cube takes a broader perspective than service “orchestration”

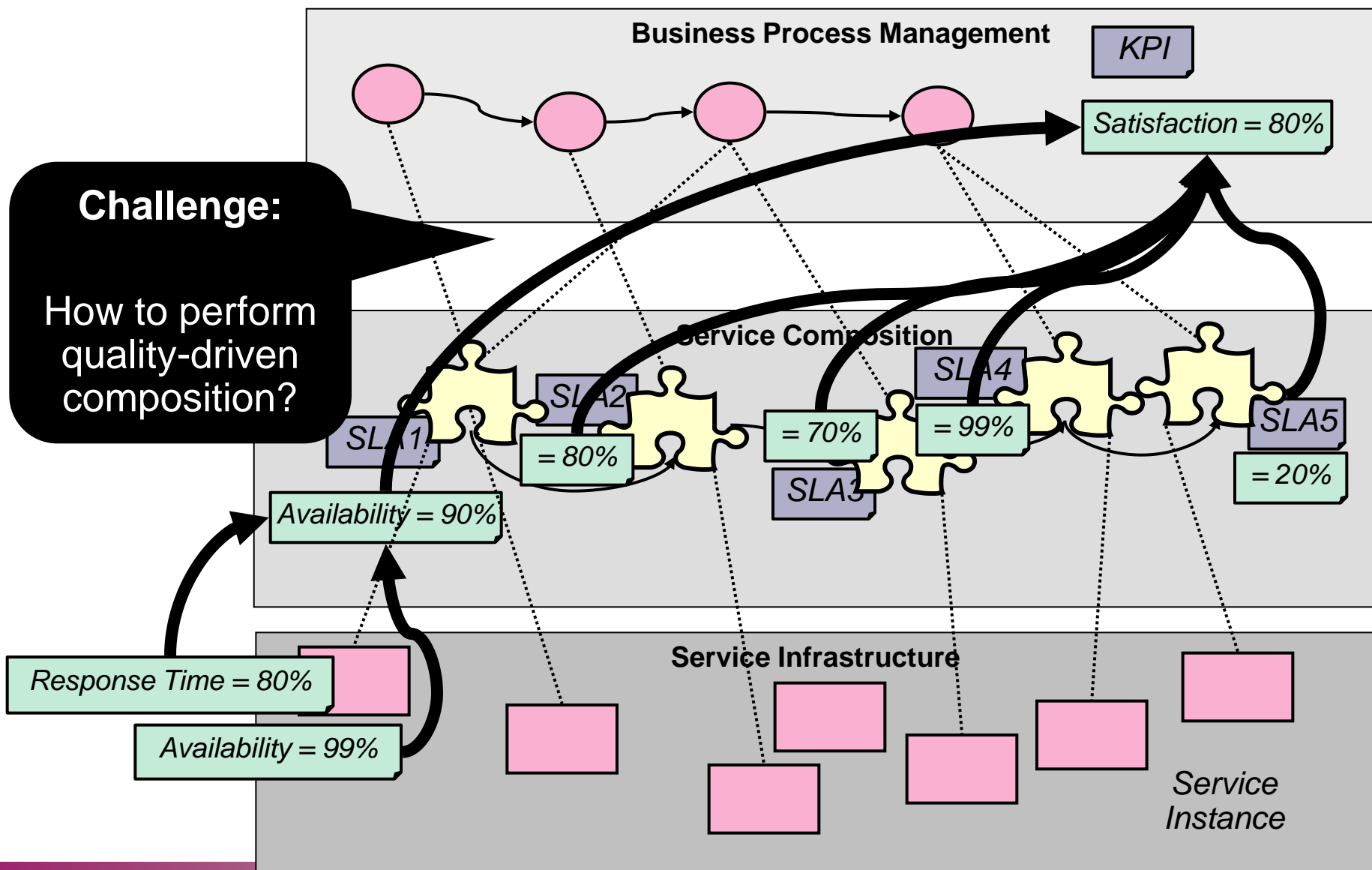
- (1) composition and coordination (~ orchestration + choreography)
- (2) considering all layers of a SBS



- Aim at enabling **QoS-aware adaptable service compositions**
- Consider **cross-layer** dependencies and **cross-cutting** concerns in composition and coordination
 - Adaptation & Monitoring
 - Quality Negotiation and Assurance
 - Engineering and Design
- Support for **in-sourcing and out-sourcing** scenarios
- Exploit new delivery models (**... as a Service**) and infrastructures/environments (**Cloud**)
- Business processes and service compositions from **Fragments**

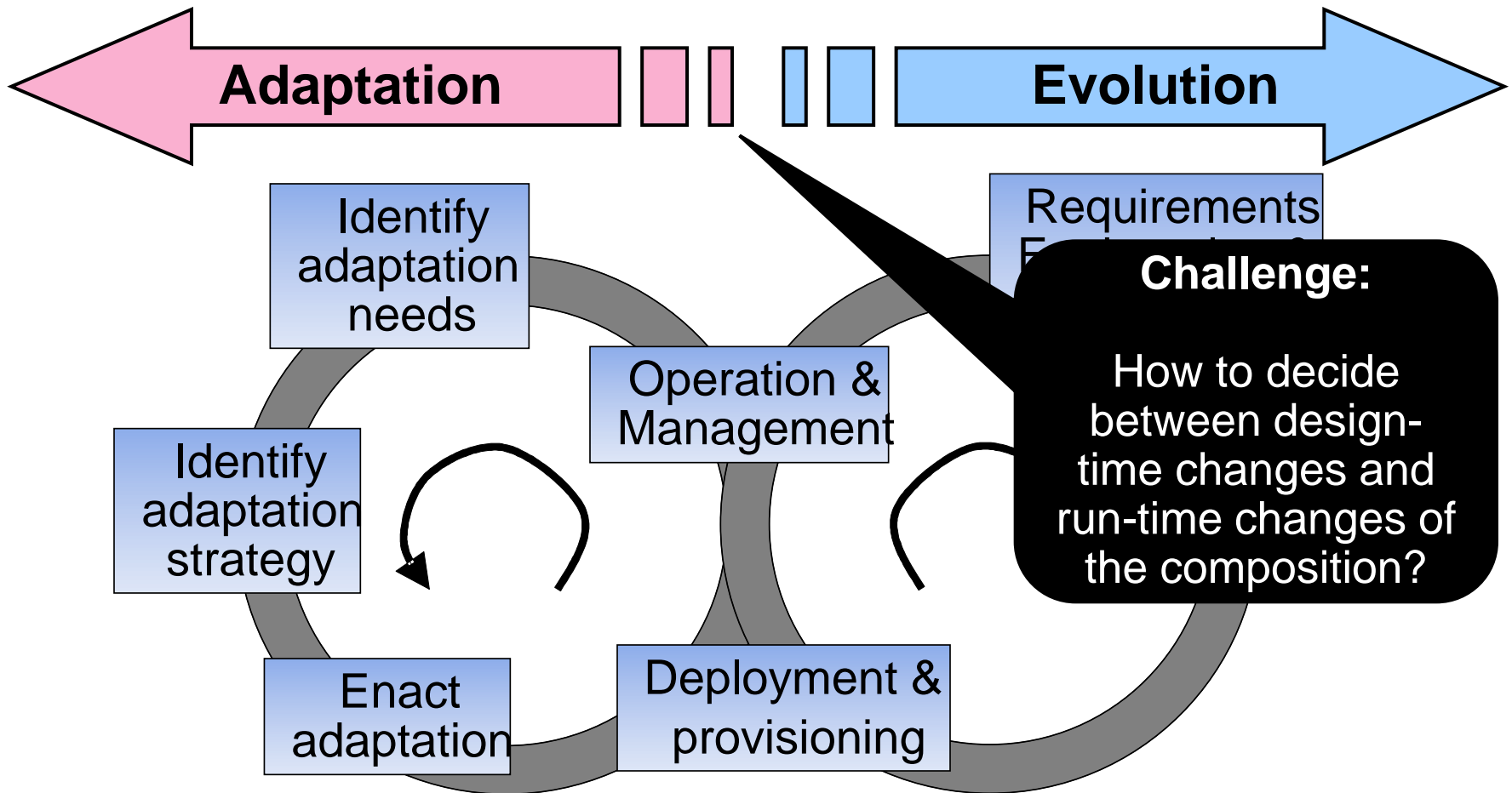
Research Challenges for SCC

Example 1



Research Challenges for SCC

Example 2

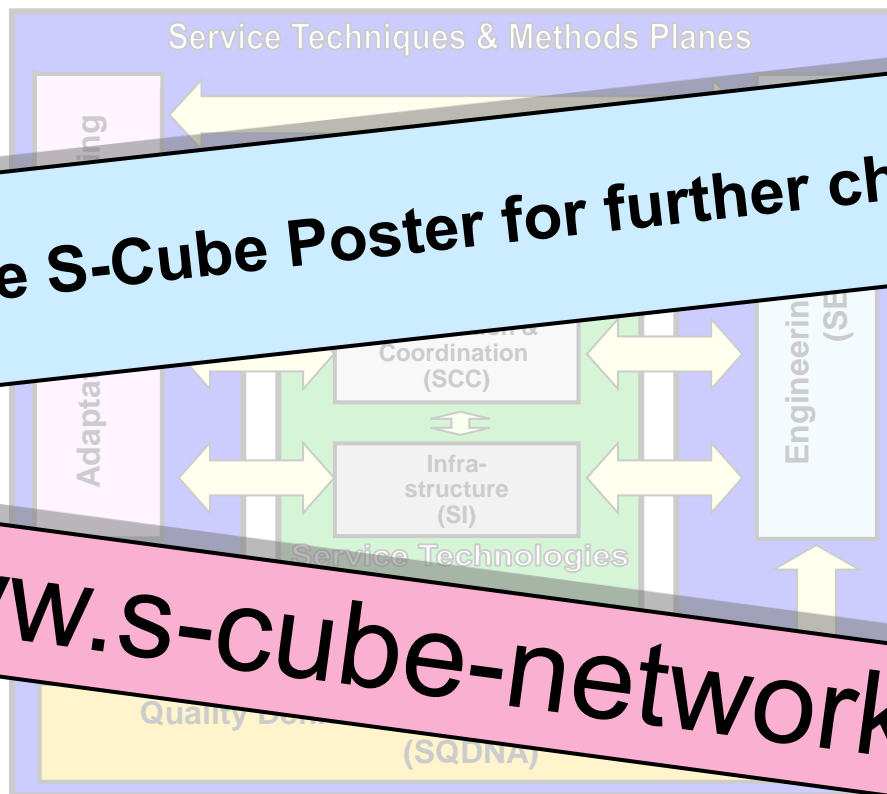




S-CUBE

Check out the S-Cube Poster for further challenges!

www.s-cube-network.eu



Funded by the European Community's 7th Framework Programme FP7/2007-2013 / Objective 1.2

www.s-cube-network.eu



Relationships to Cross-cutting Concerns

